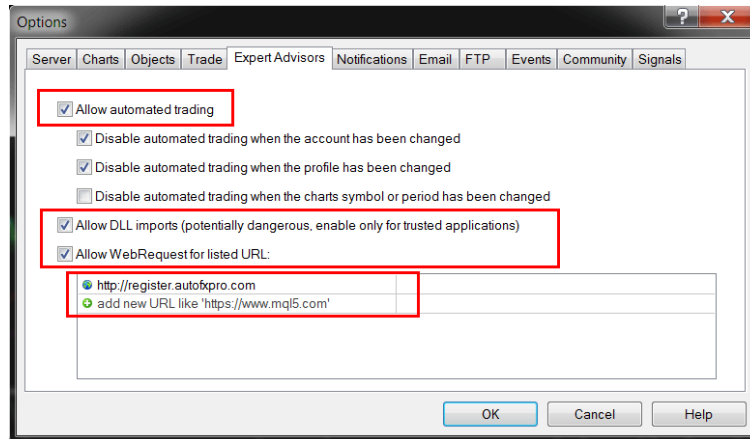


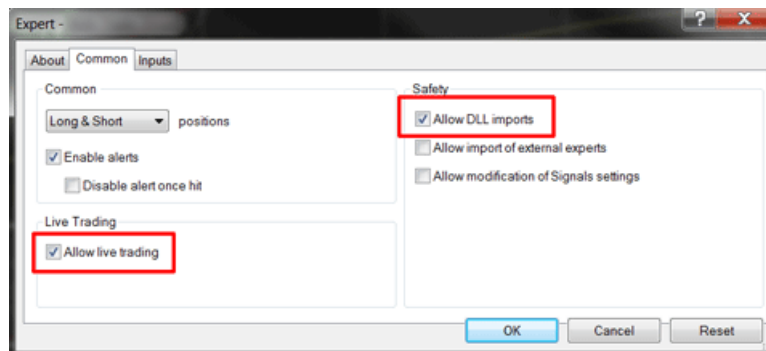
# Local Trade Copier - Manual Guide

## 1. Installation:

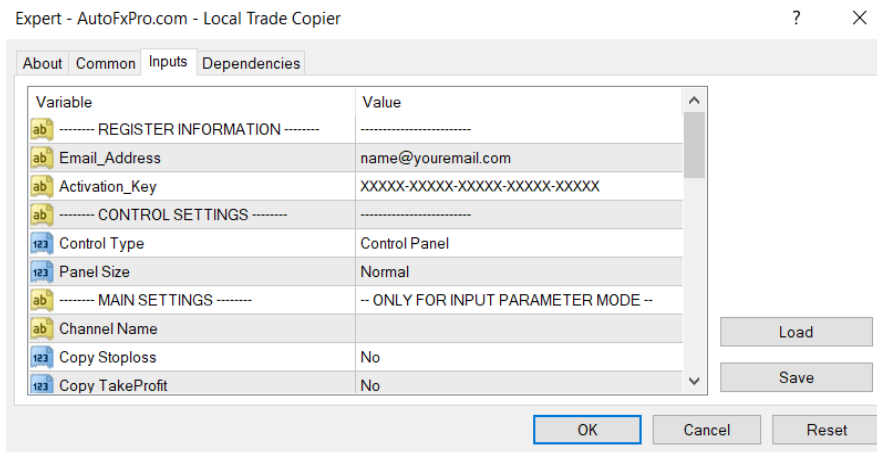
- At provider MT4/MT5 terminal, please go to Main menu -> Tools -> Options -> Expert Advisors -> Enable "Allow automated trading", "Allow DLL imports", "Allow WebRequest for listed URL", and add URL "http://register.autofxpro.com" as following:



- Go to Main menu -> Files -> Open Data Folder. It will open data folder of your MT4/MT5 terminal.
- Copy file "AutoFxPro.com - Local Trade Copier.ex4" (if you use MT4) or "AutoFxPro.com - Local Trade Copier.ex5" (if you use MT5) to directory path: /[data folder]/MQL4(5)/Experts/.
- Go back to MT4/MT5 terminal -> Main Menu -> View -> Navigator -> Right click on Expert Advisors folder in Navigator window -> Refresh -> Find "AutoFxPro.com - Local Trade Copier" -> Double click or drag it into any chart.
- At startup window -> Common tab -> Enable "Allow DLL imports" and "Allow live trading" check box.

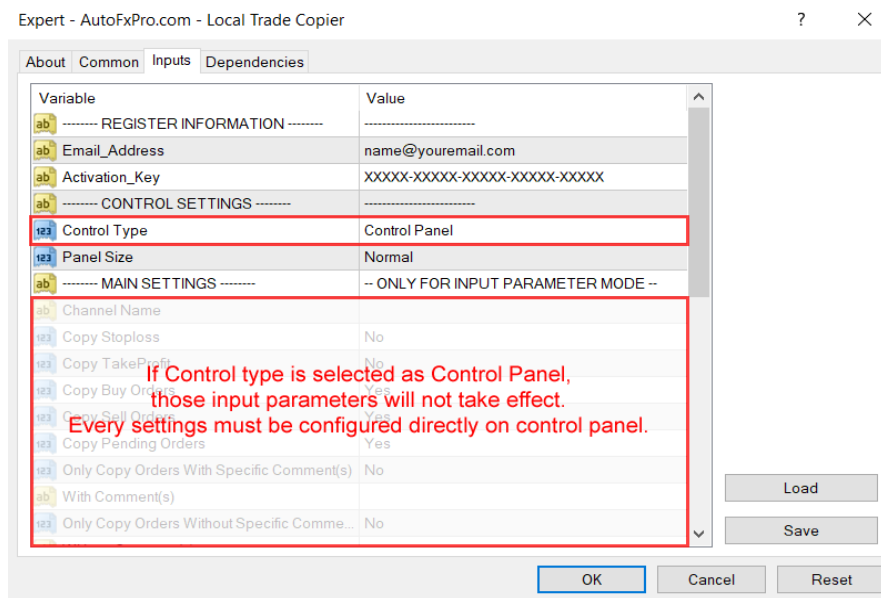


- Switch to Input tab, enter your registered email address and activation key in order to activate your license. You just need to enter your license for each account at a particular MT4/MT5 for the first time. It will remember your license info, so just leave the license blank next times.



- If you choose “Control Type” as “Control Panel” (recommended), all settings will be configured directly on graphic interface. In this case, all Input parameters will be ignored.

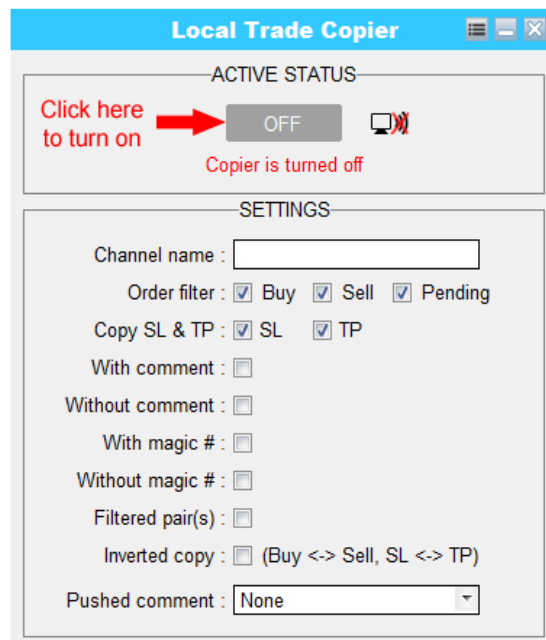
**Note:** If you choose “Control Type” as “Control Panel” (by default), don’t care about input parameters below the line “-- ONLY FOR INPUT PARAMETER MODE --”.



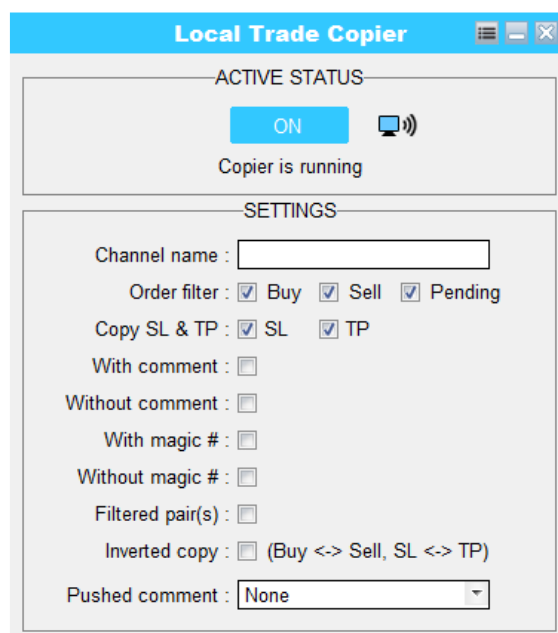
- If you choose “Control Type” as “Input Parameters”, all settings will be configured at Input parameters. This option is only useful when you use the EA on a VPS that doesn’t support graphic interface, such as MQL5 virtual server.
- If your screen resolution is too large or too small, you can adjust the panel size to Large or Small in order to fit with your screen size.

## 2. Connect to receiver accounts

- After attached to the chart at the first time, the copier EA is turned off by default. You will need to turn it on to start sending signal to local receivers by clicking to Status button at the bottom of the panel.



- Below is how it looks like after turn on.



- Once the copier is turned on and sending signal, you will see the screen icon at the top of the panel blinking.

### 3. Configure settings

- Channel name:** You can send different signals through separated channels. The receiver will choose which channel to receive signal from your provider account. If you leave the channel name as blank it will send signal with no channel name and the receivers no need to enter the channel name.
- If you want to send different filtered signals to separated channels, please run the copier EA on separated charts with different channel names and different filter configurations.

Config at chart 1  
All trades with comment "Send to channel Abc" will be sent through channel "Abc".

Config at chart 2  
All trades with comment "Send to channel Xyz" and magic number 123 will be sent through channel "Xyz".

- **Order filter:** Select which types of orders will be copied:
  - **Buy:** Buy trades will be copied.
  - **Sell:** Sell trades will be copied.
  - **Pending:** Pending orders will be copied.
  - **Copy SL:** StopLoss will be copied to receivers.
  - **Copy TP:** TakeProfit will be copied to receivers.
  - **With comment:** Only trades with specified comment will be copied.
  - **W/o comment:** Only trades without specified comment will be copied.
  - **With magic #:** Only trades with specified magic number will be copied.
  - **W/o magic #:** Only trades without specified magic number will be copied.

Note: You can filter multiple comments and magic numbers by putting semicolons (;) between them. For example: Abc; Xyz;. For comment filters, you can use wildcards as ? and \*.

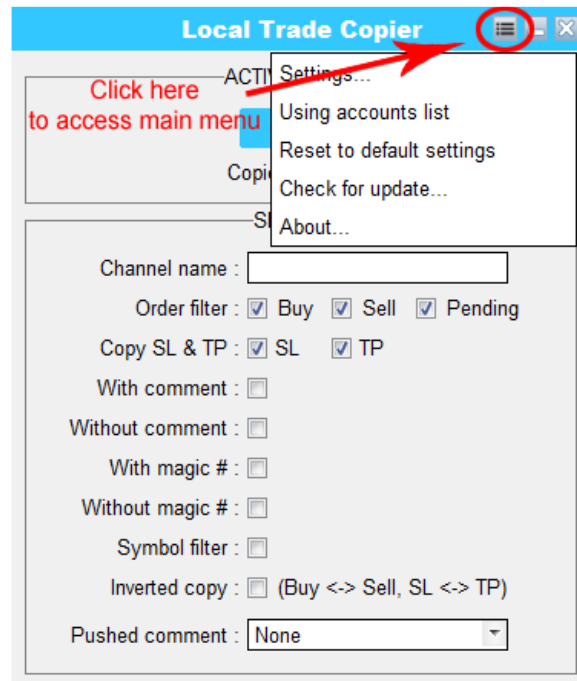
- **Symbol filter:** Only copy trades of specified symbol(s). You can input multiple symbols by putting comma (,) or semicolon (;) between them. E.g: EURUSD; GBPUSD; USDJPY. You can also exclude the symbol(s) by putting exclamation (!) in front of the symbol(s). E.g: !EURUSD; !GBPUSD; !USDJPY.
- **Inverted copy:** All trades will be inverted when copy from provider to receiver: Buy will be turned into Sell, Limit orders will be turned into Stop orders, Stoploss will be turned into Takeprofit, and vice versa.
- **Pushed Comment:** Setting how the comment will be pushed in copied trades at receiver's side:
  - **None:** Copied orders will have no comment.

- **Marked by provider:** Copied trades will have comment in format "Copied from #[provider account number]".
- **Same as provider:** Copied trades will have the same comment as source trades.
- **Custom:** Set a specific comment for copied trades.

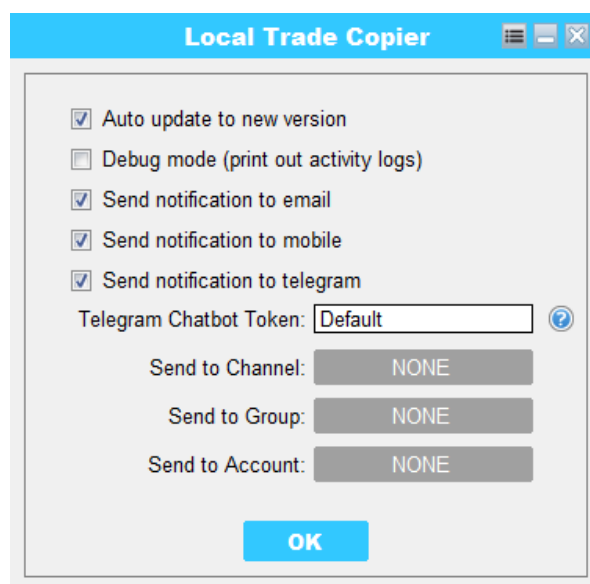
Note: Pushed comment is only applied if the receiver chooses to copy comment by provider at his side.

#### 4. Other configurations

You can change some more configurations by clicking to menu icon on the header of the panel.



- **Settings:** Configure general settings.



- **Auto update to new version:** If this option is checked, the EA will download and update automatically if there is any new version available.

- **Debug mode:** This option will print out activity logs at Experts tab of your terminal.
  - **Send notification to email:** This option will send notification of trading activities to your email. Email settings must be configured with MT4/MT5 terminal at main menu -> Tools -> Options -> Email. Check how to do it: [https://www.metatrader4.com/en/trading-platform/help/setup/setup\\_email](https://www.metatrader4.com/en/trading-platform/help/setup/setup_email)
  - **Send notification to mobile:** This option will send notification of trading activities to your mobile MT4/MT5 app. Mobile notification settings must be configured with MT4/MT5 terminal at main menu -> Tools -> Options -> Notifications. Check how to do it: [https://www.metatrader4.com/en/trading-platform/help/setup/settings\\_notifications](https://www.metatrader4.com/en/trading-platform/help/setup/settings_notifications)
  - **Send notification to telegram:** This option will send notification of trading activities to telegram channel, group or account. This requires a Telegram bot to send the message. If you don't have your own Telegram bot, you can use our default bot. Just click to the button beside each option to connect and follow the pop-up instruction.
- **Using account list:** Show up the list of account numbers that using this product with your license. If the maximum amount is exceeded, you should either exit the copier from one of using accounts or purchase more licenses to increase this maximum quota.
  - **Reset to default settings:** Reset all the settings back to manufactured settings.
  - **Check for update:** Check if a new version is available.